

“Acrodyne’s commitment to service, support and a strong relationship with the engineering group”



Sector: Water and Waste Water
Category: Water Treatment

Products: Limitorque MX Actuator and Acrogears Bevel Gearbox

THIS TECHNICAL REFERENCE IS ACRODYNE’S INTERPRETATION OF THE PROJECT BUT IT HAS BEEN APPROVED BY THE END USER

Luggage Point Major Gate Installation

Site Overview

Queensland Urban Utilities (QUU) are the fourth largest water distributor-retailer in Australia, supplying drinking water, recycled water and sewerage services to a population of more than 1.4 million in South East Queensland. Luggage Point Waste Water Treatment Plant is located near the Brisbane Airport and roughly 15kms from the CBD and supports the metropolitan area.

The Project

The Luggage Point Treatment plant required the upgrade Slug Draw Off actuation and the actuation controlling the Rectangular Desludger Travelling Bridge. The criteria was for the equipment to be suitable to the continuous exposure to H₂S (Hydrogen Sulfide) and be capable of equipment reliability with precise communication to the control system.



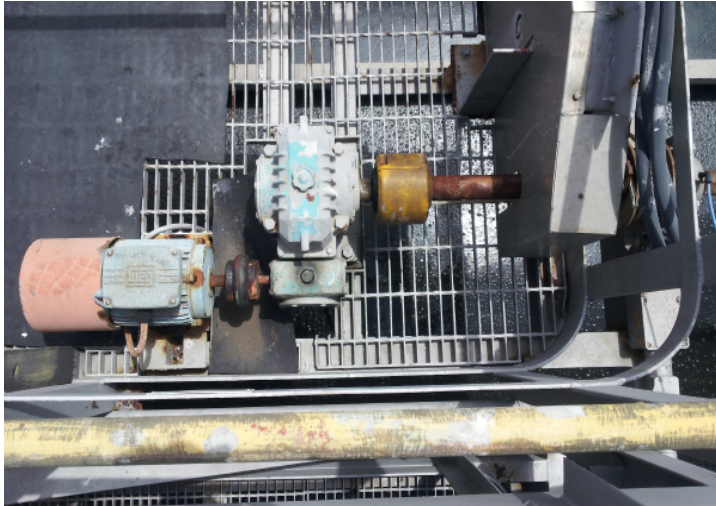
Original Slug Draw Off Equipment



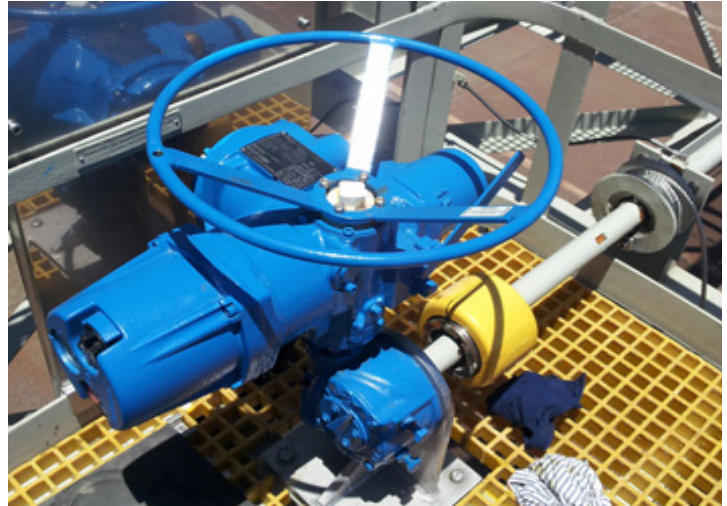
After Limitorque Slug Draw Off Upgrade

The Solution

Acrodyne’s solution was to supply a Limatorque MX-10 actuator coupled to an ACROGEARS multi-turn gearbox for the Rectangular Desludger Travelling Bridge. For the Slug draw off valves Acrodyne provided direct mounted Limatorque MX-10 and MX-20 actuators. The packages were optioned with a harsh environment marine grade coating. The base coat comprised of a Durebuild high build epoxy coating and then a top coat of Weathermax 2 part Polyurethane coating. This provides a high performance coating that exhibits excellent gloss and colour retention during extended service periods in severe industrial and marine environments.



Original Rectangular Desludger Travelling Bridge



After Limatorque Rectangular Desludger Travelling Bridge upgrade

The Result

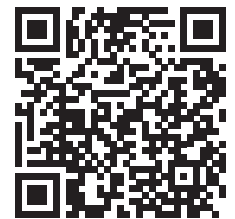
Predominantly a competitor’s site, apart from the products on offer it was Acrodyne’s commitment to service, support and a strong relationship with the engineering group at the plant that won Acrodyne the right to supply and fit our product to the project. Since the installation Acrodyne has supplied another smaller solution within the plant.

Queensland Urban Utilities can enjoy the following benefits:

- Commitment to service and support.
- Absolute encoder
- No batteries
- Greater efficiency of the process
- Site commission support at start up

Products and Services Used

Limatorque Mx-10 and Mx-20 Electric Actuator
 Acrogears Bevel Gearbox
 Paint Booth Facilities
 Acrodyne Sales and Service



FOR MORE CASE STUDIES
SCAN THE QR CODE

HEAD OFFICE

Factory 7
 11 Havelock Road (PO Box 640)
 Bayswater VIC 3153 Australia
 TEL (+61-3) 8727 7800
 FAX (+61-3) 9729 8699

PERTH OFFICE

Unit 2,
 41 Sustainable Avenue
 Bibra Lake WA 6163 Australia
 TEL (+61-8) 9412 8333
 FAX (+61-3) 9729 8699

BRISBANE OFFICE

TEL (+61) 1300 422 882
 FAX (+61-3) 9729 8699

SYDNEY OFFICE

TEL (+61) 1300 422 882
 FAX (+61-3) 9729 8699

Acrodyne Pty Ltd
 ABN 22 006 309 753

Call 1300 422 882

www.acrodyne.com.au